

NEWSNOTE

VOLUME 1, ISSUE 7 OCTOBER 26, 2022

FROM THE PRINCIPAL’S DESK...

Greetings, SME Families,

Some additional information regarding Friday’s Trunk Or Treat event:

- ◇ St. Mary’s Trunk Or Treat event is Friday, October 28, from 6:00 pm - 8:00 pm.
- ◇ The event is FREE, but we do encourage each family to bring a non-perishable food item to donate.
- ◇ No, **you do not have to decorate your car** in order to pass out candies.
- ◇ However, if you are planning to pass out a treat on Friday, please sign up under the ‘Cars’ tab here:
<https://www.signupgenius.com/go/20f0544a8ad2ba46-trunk>
- ◇ We will be mapping out a ‘trunk or treat route’ in the main parking lot, and need to have an accurate number of participants so that we can ensure the safety of our trunk or treaters.
- ◇ We will have our DJ in the courtyard; pizza, donuts, cider, treats, and pumpkin decorating in the parish center; and a PG Halloween movie playing in the gym.
- ◇ So that we can ensure that we have ample supplies for our guests, **please RSVP and note how many will be attending the event via the link above.**

Mr. Olejniczak



UPCOMING EVENTS:

- **10/26-10/28** Red Ribbon Week Continues
- **10/28** - Trunk or Treat 6-8pm
- **11/1** - All Saints Day Mass, 8:30am
- **11/3** - Bills Dress Down Day \$1
- **11/4** - **NO** Mass today
- **11/10 - 10:45 Early Dismissal** P/T Conf.
- **11/11 - NO SCHOOL:** Veterans Day
- **11/12** - Vendor & Craft Fair 9-3:00
- **11/17** - Bills Dress Down Day \$1
- **11/18** - Grandparents Mass, Christian Witness Mass, 8:30am
- **11/22** - Fall Picture Retake Day
- **11/23-11/25** - Thanksgiving Recess
- **11/28 - 1:00 Early Dismissal**, Staff PD
- **12/15 & 1/5** - Bills Dress Down Days \$1

HALLOWEEN



We do not want to detract from fun Halloween parties or in-school trick-or-treating. However, all treats that are brought to school must be individually wrapped and labeled with pertinent allergen information. Also, all goodies/treats/bags will be distributed as students leave the building at dismissal time and NOT consumed during the school day. In this way, students will still be able to celebrate the holiday in a traditional manner, while also being mindful and respectful of students who must cope with life threatening allergies. - Mr. Olejniczak



BY THE NUMBERS

RaiseRight:
Sales office open for walk-ins every:
Wednesday 12:30-2:30
Friday 8:00am-12:00pm

The office is located within the Faith Formation office in the school building. Please come to our main door #1 to be buzzed in.


Orders submitted with your child will be processed on Wednesday’s.

Great Lakes Coffee (HSA):
Profit: \$725.00

Year round ways to help:
◇ Boxtops 4 Education
◇ Amazon Smile (search for St. Mary of the Assumption)
◇ RaiseRight Program



PARENT T-SHIRTS

SME Parent T-Shirts are available for purchase anytime!


Shirts are \$10.00 and can be ordered here:
<https://forms.gle/ozf8ihiapbUkd2Lw5>

Also available anytime:
Car Magnets & Shirt Patches for \$1 each.

Please send payments Attn: Mrs. Kuhn
Orders will be distributed upon receipt of payment.

TRUNK OR TREAT

We are so excited to see how many families will be joining us on Friday! The fun begins at 6:00.
It is sure to be a ghoulishly good time!



HOME SCHOOL ASSOCIATION

Heart & Home Holiday Gift Fundraiser: Thank you to those that participated in this sale. Please keep your eye on the NewsNote for the exact delivery date.

Little Caesars Pizza Fundraiser: Sale ends Friday! Thank you to those who have participated so far! Order pick up will be the week of 11/14. We will update with the specific date as soon as it is established.

We understand that every fundraiser will not be for everyone, but we do appreciate any & all support you can give!

The Home School Association (our PTA) is a vital group of volunteers who work to ensure the positive growth of our school community. The HSA team will host a variety of events & fundraisers throughout the school year. Please keep your eye on the NewsNote, opportunities to help throughout the year will be noted here. There will be options of behind the scenes work as well as in-house hands on jobs.

Thank you to all that joined us for the My Little Sweetheart Dance! Photos are available for download now via Mrs. Tanski’s website: <https://kellytanskiphotography.pixieset.com/sme2022/>
The link will be live until November 13th.

Here is a snapshot of what is left this fall...
October:
Heart & Home Holiday Gift Fundraiser *ended today*
Trunk or Treat Night 10/28 6-8pm
Little Caesars Pizza Fundraiser *ends Friday!*
November:
Craft & Vendor Fair 11/12 (9-3)
Middle school students interested in earning service hours & families can sign up to assist here:
<https://www.signupgenius.com/go/8050C4CADA923A2FF2-fall>
Can you post/share our vendor fair flyer?
Hard copies are available in the school office by request!

INSIDE THIS ISSUE:

PRINCIPALS DESK	1
DISMISSAL	1
BY THE NUMBERS	1
HALLOWEEN	1
TRUNK OR TREAT	1
HSA	1
RAISERIGHT	2
SWEETHEART PHOTOS	2
ART	2
VOLUNTEER	2
RED RIBBON WEEK	2
DISMISSAL	2
MEGA RAFFLE	2
CALENDAR CLUB	2
NURSE NOTES	2
P/T CONFERENCES	2
8TH GRADE INFO	2
STAY IN THE KNOW	2



ST. MARY'S ELEMENTARY SCHOOL

2 St. Mary's Hill
Lancaster, NY 14086

Phone: 716-683-2112
Fax: 716-683-2134
www.smeschool.com



UPON THIS HILL,
WE DO GOD'S WILL



VOLUNTEER NEEDED

Are you a parent / grandparent with a few hours to spare during the lunch hour?

We are looking to add volunteers to our lunch monitor crew. If you are interested please contact Mrs. Kuhn (secretary@smeschool.com) and your information will be shared with Mrs. Regina to coordinate with you.



RAISERIGHT

RaiseRight walk-in office hours are each Wednesday from 12:30-2:30 & Friday from 8:00-12:00.

The brown envelope that you received in September is what you can use to send your orders in to school with your child, and what your gift cards will be sent home to you in.

To expand our selling hours we could use a few more volunteers! If you are interested in learning more about that, please email raiseright@smeschool.com.

To use the RaiseRight app on your mobile device, please email raiseright@smeschool.com to receive the enrollment code.

If you have any questions, please email raiseright@smeschool.com. We thank you for your support of the RaiseRight Program!

A NOTE FROM THE NURSE

Hello, my name is Dara Sirianni and I am your school nurse this year. I am very excited to be working with all of you. My job is to help support your child's health and learning needs here at SME. I hope to collaborate with and support you and your children as we start to resume some "normalcy" this year.

The Health Office will be following guidelines set into place by the Lancaster Central School District. A few important things to note:

- ⇒ Physicals are required for all students entering PreK, K, 1, 3, 5, 7 as well as for any new students entering the school and students wishing to participate in school sports. These physicals were due to the Health Office by October 1st. Please send these to me as soon as possible. If your child has an upcoming appointment, please email me the provider's name and date of appointment so I can note this in your child's records. Please be aware the physical must be for the 2022 school year.
- ⇒ Vision/hearing/scoliosis screenings will begin mid November. You will be notified in writing of any concerns/referrals.
- ⇒ We are beginning to bring back the opportunity for students to share birthday/celebration treats within their individual classrooms. Please note these treats must be allergy friendly as well as store bought, prepackaged with all ingredients listed on the packaging. If you are buying a bulk bag and splitting into individual treat bags that is fine but also send in the bag so that I can verify ingredients prior to students receiving them. All teachers are aware of the food allergies in their classrooms and are all very diligent and conscientious about keeping your children safe. For the upcoming Halloween Party all treats will be handed out prior to dismissal for parents to inspect prior to children consuming. All parents are encouraged to visit snacksafely.com for a list of allergy friendly snacks.

nurse@smeschool.com
716-683-2112 x128

Health Office Hours: 9:30am-1:00pm

RED RIBBON WEEK

We will celebrate Red Ribbon Week 10/24 - 10/28/22!

We've got some fun themed attire days planned for the remainder of the week:

Thursday - Team up against drugs & wear sports apparel!

Friday - Lets scare off drugs & wear Halloween t-shirts/sweatshirts/socks/hats (no masks or costumes)

Students are allowed to wear jeans this week free of rips/tears.

Students not interested in participating in the themed attire days are expected to wear their school uniform.



DISMISSAL PROCEDURES

We are happy to say that faces and names are registering with our dismissal team and things are very efficient!

That being said, students who are not picked up by 2:35pm will be sent to our Afterschool Care program.

Students can be picked up at door #6 by the stop sign leaving the property.

Afterschool Care fees are billed bi-weekly.

NURSE NOTES

You can reach
Nurse Dara Sirianni, RN at:

nurse@smeschool.com
716-683-2112 x128

Health Office Hours
9:30am-1:00pm

MEGA RAFFLE

The Mega Raffle will be held on Friday, June 9th and is LIVE & IN PERSON!! To ensure that the event is a success, and to welcome back our guests who have missed the live event the past 3 years, we are in need of additional committee members to help with the planning.

The committee will be meeting via Zoom on
Tuesday, November 8th at 3:30PM.

If you would like to be added to the meeting, or would like more information, please email megaraffle@smeschool.com.

Help is needed in the following areas:

- ♦ Bankers (2 ppl): sit in a secure room and handle the money
- ♦ Bar (4-8 ppl): reach out to vendors for donations, order the beer/wine/cups, brew coffee, serve drinks during the event
- ♦ Decorations (1-2 ppl): order & pick up balloons, assist with set-up the night before the event, wash tablecloths after the event
- ♦ Food/drinks (1-2 ppl): order pizza, pick up pop, make sure cups/plates/napkins are available/ordered
- ♦ Raffle baskets/donations (1-4 ppl): reach out to businesses for donations, assist with basket assembly for the event, sell tickets during the event

PARENT TEACHER CONFERENCES

We will be hosting conferences on Thursday, November 10th following our early dismissal @ 10:45. Conferences are available via zoom or in person.

We will announce how sign ups will be coordinated in early November.

Please note that conferences are not mandatory. This is the time to address any concerns that may have come up.

CALENDAR CLUB



We will once again run the Calendar Club fundraiser for the 2023 calendar year.

With 365 days of prizes there is over \$10,000 to be won!

Upon the receipt of your \$20 donation, your name and number will be registered for all drawings for the year 2023. Winning numbers will be physically drawn monthly at St. Mary's Rectory and will be published monthly on the parish & school websites.

Please see the order form attached electronically to reserve yours today!



8TH GRADE INFO

Catholic HS Applications: Be sure to print and sign the confirmation email you receive upon completion and submit to the main office.



Note: The confirmation email says that you are automatically signed up to take the placement exam at your first choice high school. I encourage you to follow up with your first choice school to ensure you are on their list.

8th Graders will host their Poinsettia Fundraiser once again this year. Poinsettias are from Mitchell Farms & Wreaths can be ordered and picked up from Kate's Country Cousins on Broadway. A copy of the order form is attached electronically today, orders are due on 11/7. Orders will be available for pick up on Tuesday, November 29th. We thank you in advance for your support of our 8th grade class.

STAY IN THE KNOW



Make Note: 10/26 K-8 Progress Report Upload

Save the Date : Trunk or Treat 10/28

Make Note: 11/10 10:45 Early Dismissal P/T Conferences

Make Note: 11/11 No School Veterans Day

Make Note: 11/22 (all grades) Fall Picture Retake Day



St. Mary's 8th Grade Christmas Wreath & Poinsettia Plant

Sale Fundraiser

To bring a little warmth into your home this Christmas season, the 8th grade students will be selling fresh cut wreaths and locally grown poinsettias. Proceeds will help fund the 8th grade field trip. Any excess funds will be used toward graduation costs. Thank you for your support!

22" Wreath (Undecorated with a red velvet bow) \$25.00
 22" Wreath (Decorated with pine cones, berries & a bow) \$27.00

Poinsettia Plants

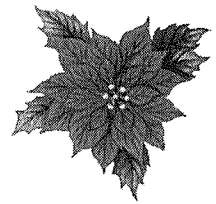
6 ½" Pot \$9.00

8" Pot \$13.50

10" Pot \$18.50

Plants come in RED, WHITE & PINK

****All ORDERS must be turned in no later than Monday, Nov. 7th. Thank you! ****



Orders for Poinsettias **MUST** be picked up on **Tuesday, November 29th, between 12:30-4:00** in the school foyer.

Orders for the wreaths can be picked up at *Kate's Country Cousins* located at 6148 Broadway, Lancaster, NY 14086 during all business hours (10-7 M-F/9-6 S&S) starting from November 28th until December 2nd. You will be given a coupon to present at the store to pick-up your purchase.

Payment is due at time of order. Please send in CASH or ONE Check for all orders.

(If you are making out one check, please make it payable to St. Mary's Elementary)

Poinsettia Fundraiser Order Form

Name: _____

Please credit my order to the following 8th grader:

Teacher: _____

Grade: _____

6 ½" Poinsettia			8" Poinsettia			10" Poinsettia			Undecorated Wreath	Decorated Wreath	Total Paid
\$9.00			\$13.50			\$18.50			\$25.00	\$27.00	
R E D	W H I T E	P I N K	R E D	W H I T E	P I N K	R E D	W H I T E	P I N K	Includes: Red Velvet Bow	Includes: Pinecones, Berries & Red Velvet Bow	

Please return **no later** than **Monday, November 7th. **Return to the School Office****

ST. MARY'S ELEMENTARY SCHOOL, LANCASTER, NY- "...visible examples of Gospel living."

NOV, 2022

Student lunches are **\$3.50**, and adult lunches are **\$5.50**. During this time, we ask that all lunches be prepaid with either cash or check made out to SME, in the exact amount. Any overage will be kept on account. All lunches are comprised of five components; protein, whole grain, vegetables, fruit & milk. In addition to the main entrée, there are four alternate choices offered daily; Julienne Salad, Yogurt Parfait, Sunbutter/Jelly, and Ham/Cheese Sandwiches. Milk is \$0.50, and may be prepaid if your student buys milk regularly. **Snack will now be served to all grades during lunchtime. No snack is ever purchased on account. Snack money must be presented at point of sale. Snacks are \$0.25-\$0.75.** If you have any questions, please feel free to contact us at kitchenmanager@smeschool.com. We appreciate your support. Tracy Hadsall, Liz Heerd & Jenny Fulcinitti

MONDAY	TUESDAY	WEDNESDAY	THURSDAY	FRIDAY
1 Lunch = \$3.50 2 Lunches = \$7.00 3 Lunches = \$10.50 4 Lunches = \$14.00 5 Lunches = \$17.50	6 Lunches = \$21.00 7 Lunches = \$24.50 8 Lunches = \$28.00 9 Lunches = \$31.50 10 Lunches = \$35.00	11 Lunches = \$38.50 12 Lunches = \$42.00 13 Lunches = \$45.50 14 Lunches = \$49.00 15 Lunches = \$52.50	16 Lunches = \$56.00 17 Lunches = \$59.50 18 Lunches = \$63.00 19 Lunches = \$66.50 Cash or Check to SME Change Will Go On Acct	No 'On Account' Snack Purchases Allowed Birthday Snacks for the Class are Paid for Separately, Please!
	1 Chili with Meat & Beans WG Corn Muffin Veggie, Fruit & Milk	2 No Alt B Available Chicken Souvlaki Pita Bread Veggie, Fruit & Milk	3 Mac-n-Cheese Tomato Soup Veggie, Fruit & Milk	4 Cheese & Pepperoni Pizza Romaine Salad Fruit & Milk
7 Breakfast Pizza Potatoes Veggie, Fruit & Milk	8 Nachos Grande With Beans Veggies, Fruit & Milk	9 No Alt B Available Chicken Caesar Garlic Bread Veggie, Fruit & Milk	10 No Lunch Service Early Dismissal Parent Teacher Conferences	11 No School Veteran's Day Observance
14 French Toast Stix Egg Patty Veggie Juice, Fruit & Milk	15 Cheeseburger Casserole Veggies, Fruit & Milk	16 No Alt B Available Taco Salad w/Tortillas Veggie, Fruit & Milk	17 Turkey Dinner Mashed Potatoes Veggies, Fruit & Milk	18 Cheese & Pepperoni Pizza Romaine Salad Fruit & Milk
21 Huge Hit Breakfast (Egg, Pancake, Ham) Potatoes & Veggie Juice Fruit & Milk	22 Beef Crumble Mashed Potatoes Veggies, Fruit & Milk	23 No School Thanksgiving Holiday	24 Be Grateful Happy Thanksgiving For The Plateful!	25 Thanksgiving Holiday Enjoy Time Doing Something Fun!
28 Breakfast Sandwich Potatoes & Veggie Juice Fruit & Milk	29 Baked Pasta w/Meatballs Veggies, Fruit & Milk	30 No Alt B Available Buffalo Chicken Salad WG Muffin Veggies, Fruit & Milk	Happy Customers Are Repeat Customers! Find Your Fave Lunch!	A = Main Lunch B = Julienne Salad C = Yogurt Parfait D = Sunbutter & Jelly E = Ham & Cheese

Menu subject to change.

Prepayment Guidelines for Student Lunches at St Mary's Elementary

1. The upcoming lunch menu is always posted on the SME Website by the last Wednesday of the month. Once you look over the menu, you may decide to prepay for as many or as few lunches as you wish.
2. A check or cash may be sent with your child/children in an envelope clearly labeled with 'Name, Amount Enclosed, and Number of Lunches Paying For.'
3. The Kitchen will then record how many Prepaid Lunches are available for your student(s), and will be marked accordingly. We will track your account(s) as the lunches are used and the account is depleted.
4. Even if the account balance is at zero, no child will ever go without a lunch. A Notice of Account will be sent via e-mail to indicate that the account needs to be replenished.
5. We also allow for ala carte milk to be prepaid. We will record and track daily milk purchases, just as we do for lunches. Simply send in a clearly marked envelope with your 'Name, Amount Enclosed, and Number of Milk Purchases Paying For.'
6. Any questions regarding the SME Lunch Program, contact us at kitchenmanager@smeschool.com, or 683-2112 extension 119 during school business hours.

Please note our daily offerings and menu options are subject to change. Our menu has become somewhat more fluid, often changing to accommodate supply chain interruptions and shortages. We have had to make several changes as deliveries have not included what was requested at the beginning of the month, when the menu was created. We do not always know when a manufacturer stops production or drops a product from their line because of demand, or lack thereof. Although these substitutions are made after the menu has been created, the daily offerings are still in keeping with the National School Lunch Program, and adhere to all standards set forth. If you have any questions or concerns, please email us at kitchenmanager@smeschool.com. Thank you for your support of our school lunch program! We love our Customers and appreciate their patience.

From the Kitchen of St Mary's Elementary

Families & Friends of SME,

We appreciate your support and patronage of our school lunch program. It is a program that we are proud of, and hope to see continue for years to come.

As parents of both current and former SME students ourselves, we have seen firsthand the changes the lunch program has endured. As we continue to improve and plan throughout the school year, we hope that you, the SME Family, buy with confidence and assurance, knowing we are committed to serving only the best, to the best! That's SME!

Daily selections range from freshly made sandwiches and soups, fresh fruits and vegetables and from-scratch entrees. We limit the amount of pre-packaged, pre-assembled items that we serve so that you can feel comfortable knowing that your student is eating healthier at lunchtime.



Daily lunches are just one of the many offerings available to you.

Your student can celebrate a birthday with his or her class by enjoying one of our many allergy friendly, baked, reduced fat or whole grain snacks.

Volunteering in the cafeteria? We would love to serve you a freshly-made Julienne salad, mixed berry yogurt parfait, or just a bowl of homemade soup. Email us your order and we will be happy to serve you, and your student!



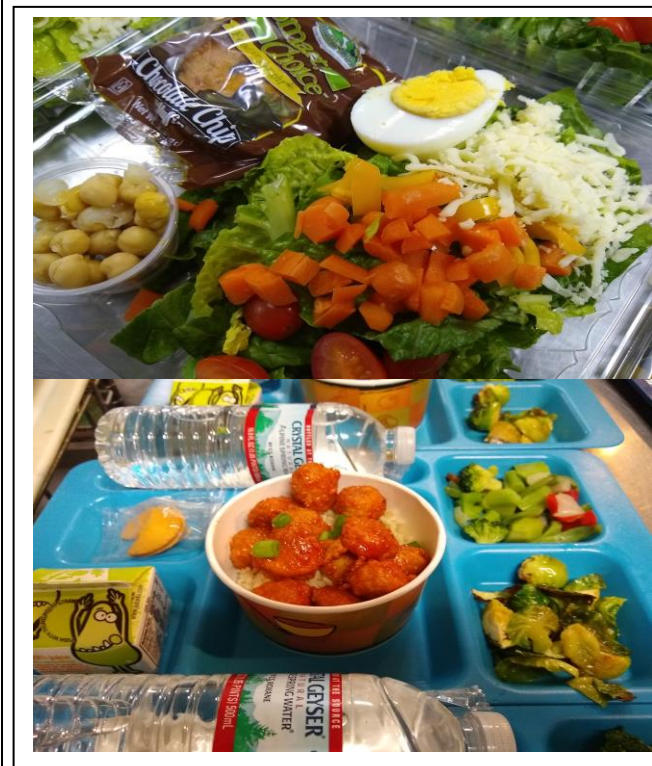
Our pre-pay plan allows for easy, breezy weekly planning. With a main entrée and five alternate choices offered daily, there are options for every student, every appetite. Lunches can be prepaid with cash or check made out to SME. Account balances are maintained, and notices will be sent out monthly to keep you up-to-date.

We wish our SME family a happy and healthy school year! We look forward to serving you in 2022-2023.

Tracy Hadsall, Liz Heerdts & Jenny Fulciniti

SME Kitchen

kitchenmanager@smeschool.com



St Mary's Elementary Student Menu Favorites

Bflo Chicken Sandwich	Whole Grain Breaded Chicken Patty, Melted Provolone with a Side of Frank's Sauce and Blue Cheese Dressing
Breakfast Sandwich	Whole Grain English Muffin, Scrambled Egg Patty, Slice of American Cheese and Ham
Breakfast Pizza	Whole Grain Pizza Crust topped with Eggs, Cheddar & Mozzarella Cheeses and Real Bacon Crumbles
Baked Pasta & Meatballs	Whole Grain Pasta Baked with Marinara Sauce, Mozzarella Cheese and Mini Meatballs
Chicken Dinner	Chicken pieces lightly battered and baked to a Tasty Crunch served with Mashed Potatoes, Gravy, Veggies and Fruit
Chicken Parm	Whole Grain Breaded Chicken Patty, baked with Low Fat Mozzarella Cheese and Marinara Sauce
Chicken Alfredo	Chicken tossed in a delicate Alfredo Sauce, served over Whole Grain Pasta
Chicken Souvlaki	Boneless, Skinless, marinated Chicken Breast grilled and served with fresh Vegetables (sweet peppers, onions, romaine), Feta Cheese and Greek Dressing; served as either an open salad, or stuffed into a Whole Grain Pita Pocket
Calzones	Whole Grain Pocket with Marinara Sauce and Ricotta & Mozzarella Cheeses
Cheese Pizza	Whole Grain Pizza Crust with Tomato Sauce and Low Fat Mozzarella
Chicken Fajitas	Marinated Chicken Breasts sliced and grilled with Sweet Peppers and Onions. Served on a Whole Grain Tortilla with toppings and Brown Rice
Chicken Stir Fry	Boneless, Skinless Chicken Breast marinated in a Teriyaki Sauce, sautéed with Fresh/Frozen Asian Vegetables, served with Brown Rice
Chicken Caesar Salad	Romaine Lettuce topped with lightly seasoned Grilled Chicken Breast, Real Crumbled Bacon, Whole Grain Croutons, Grated Parmesan Cheese and Caesar Dressing
Chicken Incredi Bowl	Chunks of Breaded Chicken and Corn on top of Mashed Potatoes, with Chicken Gravy and melted Cheddar Cheese
Cheeseburger	Hamburger Patty on Whole Grain Bun with Cheese, Condiments on Side
Fish Sandwich	Battered Cod served on a Whole Grain Bun with Cheese. Freshly made Coleslaw is served on the side
French Toast Sticks	Whole Grain French Toast Sticks baked and served with Warm Syrup, Sausage Links and Hash Brown Patty
Grilled Cheese	Whole Grain Bread and American Cheese grilled to a golden crisp, served with Tomato Soup
Goulash	Whole Grain Pasta Baked with Marinara Sauce, Sautéed Onions, Sweet Peppers and Ground Beef
Italiano Incredi Bowl	Risotto (Italian Arborio Rice), Mini Meatballs, Escarole & Northern Beans sprinkled with Parmesan Cheese
Loaded Baked Potato	Fresh, delivered weekly, Russet Potatoes, baked and topped with Steamed Broccoli, melted Cheese and Real Bacon Crumbles
Mozzarella Sticks	Whole Grain Breading over Mozzarella Cheese, baked and served with Marinara Sauce
Mexi Incredi Bowl	Brown Rice served in a Bowl covered with Taco Meat, Corn, Black Beans, Shredded Cheddar Cheese & Taco Sauce
Nachos Grande	Lean Ground Beef spiced with Taco Seasonings, served hot over Whole Grain Tortilla Chips, topped with melted Mild Cheddar Cheese Sauce, with Optional Salsa, Sour Cream and or Hot Sauce
Popcorn Chicken	Whole Grain Breaded Popcorn Chicken Bites baked to a tasty Crunch! Served with Optional BBQ Sauce
Ramen Incredi Bowl	Restaurant Grade Ramen Noodles and Broth, served with a variety of Fresh Veggies
Sweet-n-Sour Chicken	Crunchy Popcorn Chicken tossed in a Sweet Sour Sauce, served over a Bowl of Brown Rice
Turkey Dinner	Sliced Turkey, Gravy, Mashed Potatoes, Stuffing, Veggies & Cranberry Sauce, and even Fruit Pie! So Grateful are We!
Taco-in-a-Bag	Taco Meat scooped into a Bag of Whole Grain Tortilla Chips with Shredded Cheddar Cheese & Salsa